

---

# FreeAgent® | Theater™ User Guide



---

## FreeAgent® | Theater™ User Guide

© 2008 Seagate Technology LLC. All rights reserved. Seagate, Seagate Technology, the Wave logo, and FreeAgent are trademarks or registered trademarks of Seagate Technology LLC, or one of its affiliates. All other trademarks or registered trademarks are the property of their respective owners. When referring to hard drive capacity, one gigabyte, or GB, equals one billion bytes and one terabyte, or TB, equals one thousand billion bytes when referring to hard drive capacity. In addition, some of the listed capacity is used for formatting and other functions, and thus will not be available for data storage. Quantitative usage examples for various applications are for illustrative purposes. Actual quantities will vary based on various factors including file size, file format, features, and application software. Seagate reserves the right to change, without notice, product offerings or specifications.

Seagate Technology LLC  
920 Disc Drive  
Scotts Valley CA 95066 U.S.A.

# Contents

<b>1. Overview</b>	<b>5</b>
Using FreeAgent   Theater	5
FreeAgent   Theater Components	6
Navigating the FreeAgent   Theater Menus	10
Selecting a Storage Drive	10
Organizing Media Files and Folders	10
Preparing Background Music Files for Slideshows	11
<b>2. Setting Up FreeAgent   Theater</b>	<b>12</b>
Selecting a Screen Language	12
Configuring Your Media Player	12
Audio Setup	13
Video Setup	13
Resetting Your Media Player	17
System Setup	17
Photo Slideshow Setup	18
Movie Setup	20
<b>3. Playing Music</b>	<b>22</b>
Supported Audio File Types	23
Playback Options	23
<b>4. Playing Videos</b>	<b>24</b>
Supported Video File Types	25
Video Display	25
Subtitle Formats	25
Video Playback Features	26
<b>5. Viewing Photos</b>	<b>27</b>
Viewing Individual Photos	27
Browsing Photo Thumbnails	28
Rotating Photos	29
Playing Photos and Videos from Compatible Digital Cameras	30
Playing a Slideshow	31

Slideshow Features ..... 32

**6. Using the FreeAgent | Theater Desktop Application ..... 33**

    Installing the FreeAgent | Theater Software ..... 33

    Using the FreeAgent | Theater Application ..... 34

        Accessing the FreeAgent Drive Features ..... 34

        Using the System Tray Status Icon ..... 35

        Restoring the System Tray Status Icon ..... 36

**7. Using Media Sync ..... 38**

    Using Simple Sync ..... 39

    Using Custom Sync ..... 39

    Managing Media Sync Settings ..... 40

        Editing Media Sync Settings ..... 40

        Checking Sync Status ..... 40

        Deleting Media Sync Settings ..... 41

    Using Automatic Sync ..... 41

        Turning Off Automatic Sync ..... 41

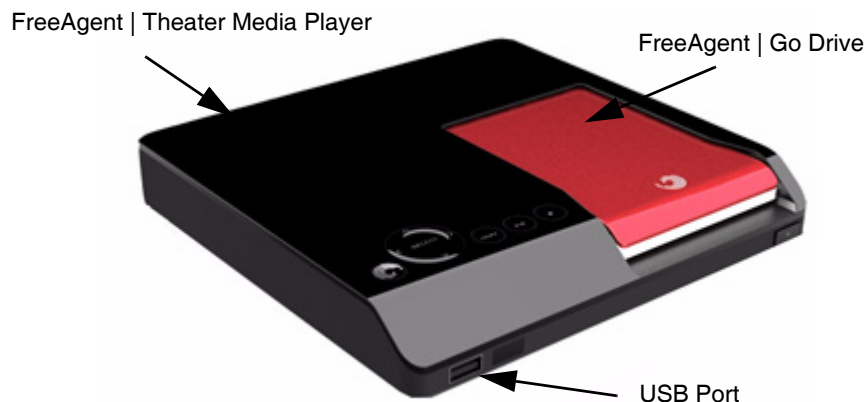
**8. About DivX® Certification ..... 42**

    About DivX ..... 42

**Index ..... 43**

# 1. Overview

The FreeAgent | Theater media player lets you use your TV to play digital media files copied from your computer. You use the FreeAgent | Go drive to collect videos, photos, and music from your computer and the FreeAgent | Theater media player to play them on your TV.



**Figure 1:** FreeAgent | Theater with FreeAgent | Go Drive

In addition to using the FreeAgent | Go drive with your media player, you can use the USB port on the front of the media player to connect any NTFS- or FAT32-formatted USB external storage device to the media player. You can also play images and videos directly from compatible digital cameras via a USB cable.

## Using FreeAgent | Theater

You can use the FreeAgent | Theater media player without installing the FreeAgent | Theater application software by dragging media files from your computer to your FreeAgent drive and using the media player to play them on your TV. However, the FreeAgent | Theater application allows you to access your external drive features and to synchronize media folders on your drive with those on your PC.

To use the FreeAgent | Theater with a FreeAgent | Go drive,

1. If you want to use the FreeAgent | Theater application to manage and sync your media files, install the software on your computer from the FreeAgent | Theater Installation CD included with the FreeAgent | Theater.
2. Connect the PC dock to your computer and insert your FreeAgent | Go drive.

3. If you've installed the software, use the FreeAgent | Theater desktop application to select the media files you want to play on your TV and follow the on-screen instructions to copy those files onto your FreeAgent drive.

— OR —

If you've chosen not to install the FreeAgent | Theater software, drag media files from your PC to your FreeAgent drive.

4. Remove the FreeAgent drive from the PC dock and insert it in the media player connected to your TV.

---

**Note:** If you haven't connected the media player to your TV yet, follow the steps in the *Setup Guide* included in your shipping carton to connect the components.

---

5. Use the remote control to navigate through the media player menus to access and play your videos, photos, and music on your TV.

---

**Note:** The FreeAgent | Theater media player works with any NTFS- or FAT32-formatted USB external storage device or compatible digital camera connected to the USB port on the front of the media player.

---

## FreeAgent | Theater Components

FreeAgent | Theater consists of these components:

- A media player that connects to your TV and works with both standard definition and high definition TVs
- A PC dock that connects to your computer
- A FreeAgent | Go external drive that connects directly to both the media player and the PC dock for easy transport of media files between computer and TV
- A remote control to navigate the FreeAgent | Theater TV interface
- A CD containing the FreeAgent | Theater application software and this *FreeAgent | Theater User Guide*

## FreeAgent | Theater Media Player

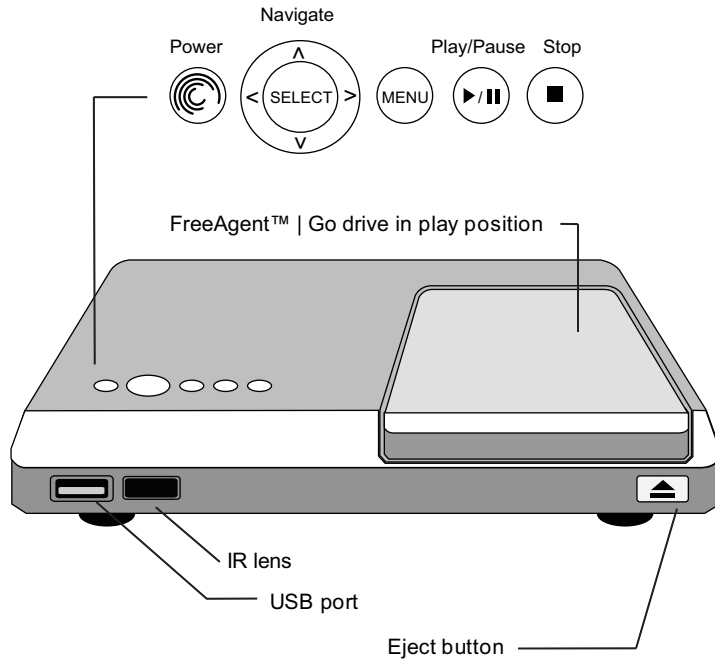


Figure 2: FreeAgent | Theater Media Player: Front View

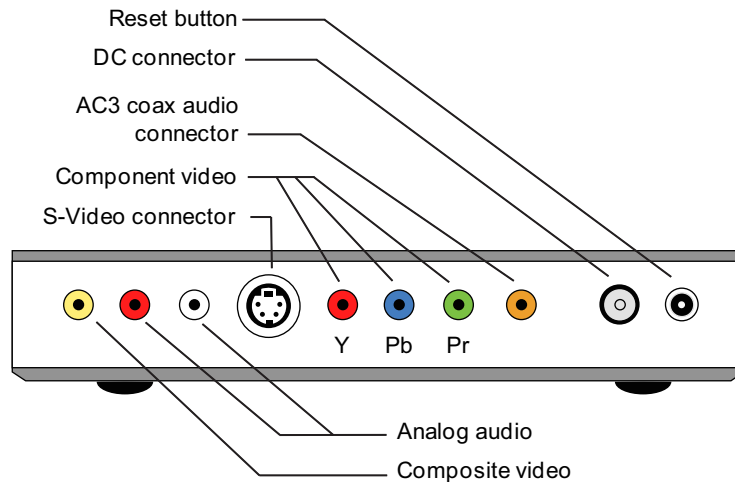


Figure 3: FreeAgent | Theater Media Player: Rear View

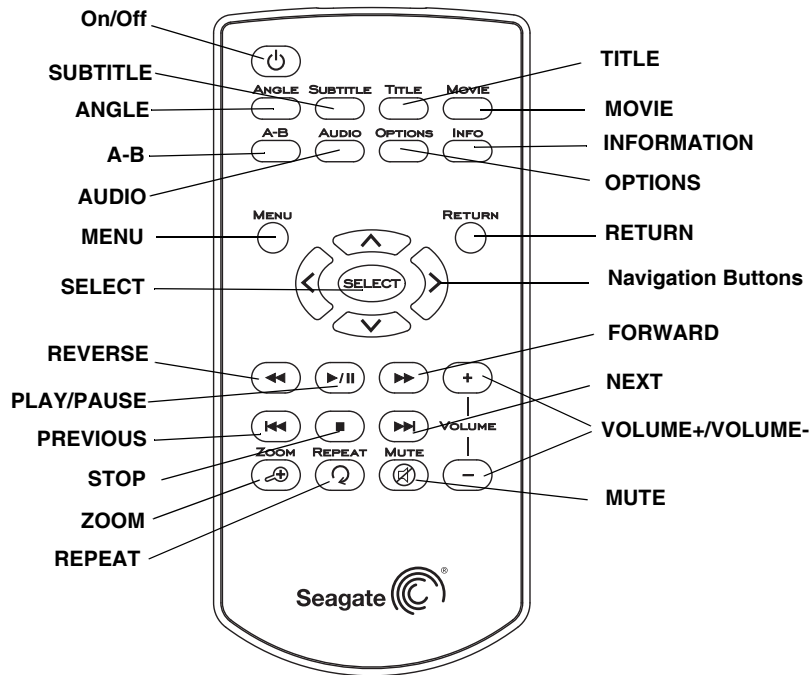
## FreeAgent | Go Drive and PC Dock



**Figure 4:** PC Dock with FreeAgent | Go Drive Inserted

### Remote Control

All media player features can be controlled using the remote control buttons. Certain functions can also be completed using the controls on the front of the media player.



**Figure 5:** Remote Control



**Table 1:** Remote Control Buttons

<b>On/Off:</b> Turn FreeAgent   Theater on and off.	<b>Navigation Buttons:</b> Press the arrow buttons to navigate the menus.
<b>ANGLE:</b> Switch a movie angle or rotate a photo.	<b>&lt;&lt; (REVERSE):</b> Press to fast reverse the current playback. Press repeatedly to select faster reverse speeds.
<b>SUBTITLE:</b> Activate available subtitles when playing DivX® files. Supported subtitle formats: SRT, SMI, SUB, SSA	<b>&gt; /    (PLAY/PAUSE):</b> Play or pause movies, music, and photos.
<b>TITLE:</b> Open the movie title menu.	<b>&gt;&gt; (FORWARD):</b> Press to fast forward the current playback. Press repeatedly to select faster forward speeds.
<b>MOVIE:</b> Open the movie main menu.	<b>VOLUME+/VOLUME-:</b> Increase or decrease volume.
<b>A-B:</b> Select a start (A) and end (B) point in a video and replay that portion.	<b> &lt;&lt; (PREVIOUS):</b> Return to the previous file when playing music or viewing photos or to the previous chapter in a video. Page up in a file list.
<b>AUDIO:</b> Select a language for an audio track in a file.	<b>■ (STOP):</b> Stop playback.
<b>OPTIONS:</b> Search Title/Chapter/Time. Change from list to thumbnail view when viewing photos.	<b>&gt;&gt;  (NEXT):</b> Go to the next file when playing music or viewing photos or to the next chapter in a video. Page down in a file list.
<b>INFORMATION:</b> Display media information such as file properties or elapsed time.	<b>ZOOM:</b> Zoom in or out when playing photos or movies. Press repeatedly to select higher zoom levels. Photo zoom levels: 2x ,4x, 8x, 16x Movie zoom levels: 2x, 4x, 8x
<b>MENU:</b> Open the main menu for FreeAgent   Theater.	<b>REPEAT:</b> Repeat a music selection or slideshow.
<b>RETURN:</b> Return to the previous screen when navigating menus. Change from thumbnail to list view when viewing photos.	<b>MUTE:</b> Press to mute audio output; press again to resume audio.
<b>SELECT:</b> Confirm a menu selection or play the selected music, video, or photo file.	

## Navigating the FreeAgent | Theater Menus

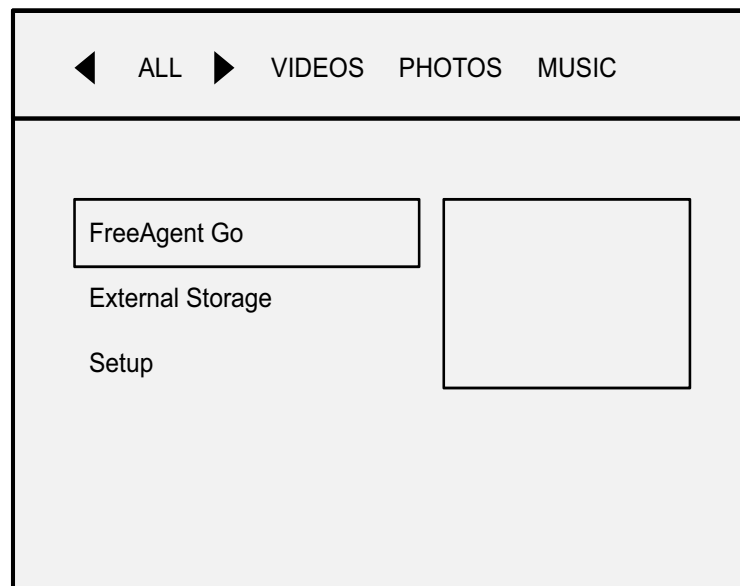
Use the buttons and arrow keys on the remote control to navigate among the FreeAgent | Theater media player menus. Each media type has its own set of submenus that allow you to set up and control the playback of selected files. See the video, music, and photo sections of this user guide for detailed information about using those menus.

### Selecting a Storage Drive

You can use the media player to play videos, music, and photos you've stored on either a FreeAgent | Go drive or another USB external storage device.

**Step 1.** On the main menu, select the device (**FreeAgent Go** or **External Storage**) containing the media you want to play on your TV.

If you select **External Storage**, make sure the external drive is connected to the USB port on the front of the media player.



**Figure 6:** Main Menu

**Step 2.** Navigate through the specific video, photo, and music menus to access features available for each media type.

### Organizing Media Files and Folders

The FreeAgent | Theater stores all the media files and folders you've copied from your computer and displays your files in a structure similar to that seen

on your computer. So before you copy media from your computer, it's a good idea to take the time to organize your files in folders and sub-folders whose names tell you clearly what's inside.

For example, you can create sub-folders in your **My Pictures** folder for each month or for important events, or create sub-folders in your **My Music** folder for various genres. Any system will work as long as you give your folders names that make sense to you and allow you to find the media files you're looking for quickly and easily.

### Preparing Background Music Files for Slideshows

If you want to be able to play background music with a slideshow of your pictures on your TV, you must put the desired music files in the same folder as the photos to be played in the slideshow **before you copy your media files from your PC**. The Setup menu on the media player will allow you to turn the Background Music option on or off, but you must prepare the slideshow folder on your computer.

For more suggestions on how to organize and label your media files, go to the Knowledge Base at [www.seagate.com](http://www.seagate.com).

## 2. Setting Up FreeAgent | Theater

Although the FreeAgent | Theater media player is ready for use as soon as you plug it in, you can adjust the audio, video, system, photo, and movie settings for optimal use with your TV.

See the *FreeAgent | Theater Setup Guide* included in your product carton for instructions on how to connect the components.

### Selecting a Screen Language

The first time you connect your media player to your TV, a language selection screen asks you to select your on-screen language from a list of available languages. You won't see this screen again unless you reset your media player to the factory default settings.

### Configuring Your Media Player

Use the **Setup** menu to configure the audio, video, system, photo, and movie settings for your media player.

To open the **Setup** menu,

**Step 1.** Select **Setup** on the main menu.



**Figure 7:** Main Menu

The **Setup** menu opens.

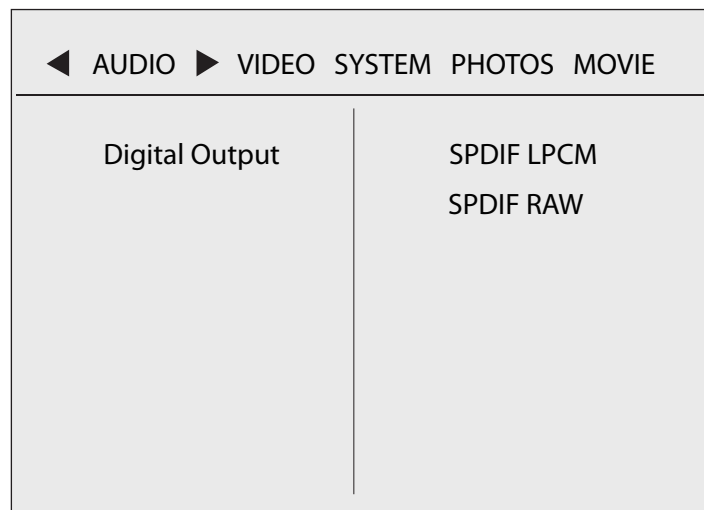
**Step 2.** In the menu bar at the top of the screen, select the feature whose settings you want to adjust.

**Step 3.** To exit the **Setup** menu, press **Return**.

## Audio Setup

To set up the way the audio portion of media files is played,

- Click **Audio** in the menu bar.



**Figure 8:** Audio Setup Menu

### Audio Digital Output

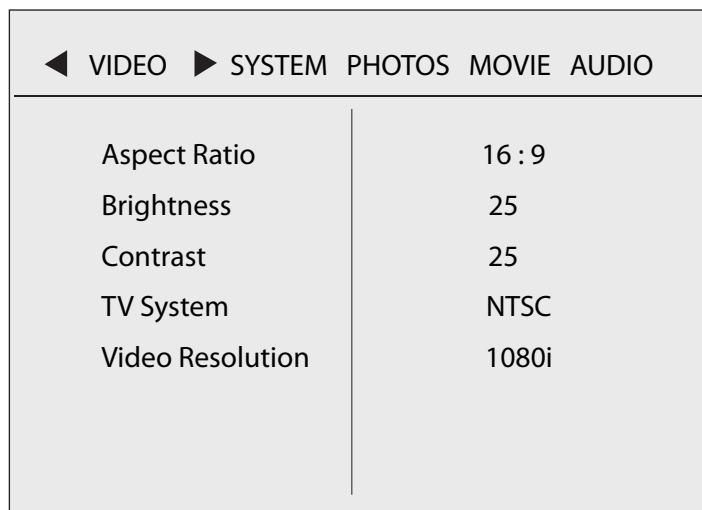
**SPDIF LPCM:** Convert the multi-channel audio output into stereo.

**SPDIF RAW:** Play the digital audio without decoding.

## Video Setup

To set up the way images are displayed on your TV,

- Click **Video** in the menu bar.



**Figure 9:** Video Setup Menu

### Aspect Ratio

Standard definition TVs display in a 4:3 aspect ratio; high definition TVs display in a 16:9 aspect ratio.

**PAN SCAN 4:3:** The standard definition broadcast television format.

**Letter Box 4:3:** Transfers a wide screen film to a 4:3 video display while maintaining the film's original aspect ratio.

**16:9:** The same viewing area as a movie theater screen.

### Brightness

Adjust the picture brightness to the desired level.

### Contrast

Adjust the picture contrast to the desired level.

### TV System

**NTSC:** American television standard

**PAL:** European television standard

### Video Resolution

The media player transmits an analog video signal in both standard definition (SD) and high definition (HD) resolutions for American NTSC- and European PAL- compatible televisions.

You have four video resolution options, which are explained below:

**SD Interlace** (composite and S-Video hookup)

**SD Progressive** (component hookup)

**720p** (HD)

**1080i** (HD)

Your choice depends upon several factors:

- What country you live in
- Whether you have a standard definition (SD) or high definition (HD) TV
- Whether you want to use a basic composite connection, a higher quality S-Video connection, or the highest quality component connection.

---

**Note:** Composite cables are included with your media player; S-Video and component cables are not.

---

### Frequently Asked Questions About Video Resolution

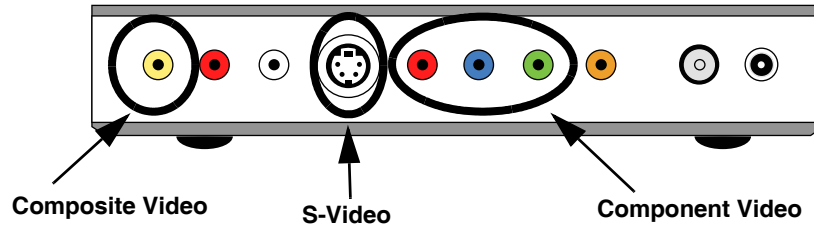
**What are 720p and 1080i?** 720 and 1080 refer to the number of horizontal lines used to fill the screen. The more lines, the better the picture. The “p” refers to progressive scanning, while the “i” refers to interlaced scanning.

**What do Progressive and Interlaced mean?** These are the two basic video display methods and they define how the lines that make up the picture on your TV screen are drawn. Progressive scanning produces a smoother, sharper image and should be selected if your TV supports it.

**What’s the difference between composite, S-Video, and component video connections?** The media player supports three types of video connection:

- **Composite** video carries both color and brightness over a single cable and produces a fair picture quality.
- **S-Video** splits the video information into two signals, one for color and the other for brightness, and produces a good picture quality.

- **Component** video splits video information into three separate signals, two for color and one for brightness, and produces the best picture quality.



**Figure 10:** Composite, S-Video, and Component Hookups

#### Video Resolution Options:

- **SD Interlace (Composite and S-Video)**
  - **American NTSC: 480i** (for the USA, Canada, Mexico, Japan, Taiwan, South America, South Korea, the Philippines, and Puerto Rico)
  - **European PAL: 576i** (for the U.K, Australia, Malaysia, Germany, China, Africa, South America, Indonesia, Yugoslavia, France, Eastern Europe, Russia, and Greece)
- **SD Progressive (Component)**
  - **American NTSC: 480p** (for the USA, Canada, Mexico, Japan, Taiwan, South America, South Korea, the Philippines, and Puerto Rico)
  - **European PAL: 576p** (for the U.K, Australia, Malaysia, Germany, China, Africa, South America, Indonesia, Yugoslavia, France, Eastern Europe, Russia, and Greece)

**Note:** HDTV maintains the same standards and regions as NTSC and PAL, but the signal is displayed digitally and the resolution increases to 720p and 1080i.

- **720p (HD):** Better quality picture than SD interlace or SD progressive if your TV supports this format. Check your TV manual for supported formats.
- **1080i (HD):** Better quality picture than 720p, SD interlace, or SD progressive if your TV supports this format. Check your TV manual for supported formats.

#### Problems with Video Resolution



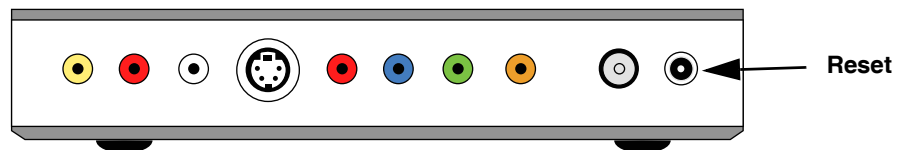
The higher the resolution your TV can support, the better your picture will be. If you select a high resolution but are unable to see a picture, select a lower resolution until a picture appears on your TV.

If you're having trouble getting any picture at all on your TV, you might have a problem with your cable connections or a video resolution that's set too high. If you're sure your cables are connected properly and you still can't get a picture, press the reset button on the rear of the media player to reset the device for your region. The reset causes the unit to display the lowest video resolution, which most televisions are capable of displaying.

Also press the **Input** button on your TV to switch to the input to which the media player is connected.

## Resetting Your Media Player

On the rear of the media player is a reset button.



**Figure 11:** Reset Button

- Press once to reset the device to the PAL European TV standard.
- Press a second time to reset the device to the NTSC American TV standard.
- Hold for 10 seconds to restore factory default settings.

## System Setup

To configure your system language preferences,

- Click **System** in the menu bar.



**Figure 12:** System Setup Menu

### **Version**

System software version

### **Screen Language**

Select the language to be used to display the **Setup** menu, information, and video subtitles.

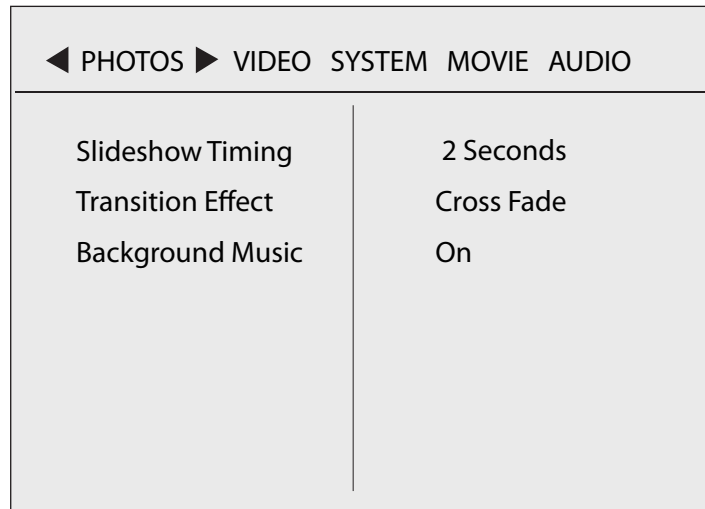
### **Factory Default**

Reset all **Setup** menu functions to the factory default and display the initial language selection screen.

## **Photo Slideshow Setup**

To set up a slideshow,

- Click **Photos** in the menu bar.



**Figure 13:** Slideshow Setup Menu

Create a slideshow by selecting the amount of time each image is displayed and the transition effect as you move from one image to the next and turn on the Background Music option.

### Timing

Set the amount of time each image in a slideshow remains on the screen:

- 2 seconds (default setting)
- 5 seconds
- 10 seconds
- 30 seconds
- 1 minute
- 2 minutes
- Off

### Transition Effect

Choose the way one image is replaced by another during the slideshow:

- Cross Fade (default setting)
- Left to Right
- Top to Bottom

- Waterfall
- Snake
- Dissolve
- Strip Left Down
- All Effect Shuffle
- Off

---

**Note:** If you select **Off**, your photos simply replace one another after the allotted amount of time with no transition effect.

---

### Background Music

If you want to play background music with your slideshow, you must put the desired music files in the same folder as the photos to be played in the slideshow **before you copy your media files from your PC**.

- If the **Background Music** setting is **Off**, no background music plays automatically when you play a slideshow. However, you can play background music by first starting your music and then starting the slideshow. (Default Setting)
- If the **Background Music** setting is **On** and the folder containing the slideshow images also includes audio files or a playlist, that music is automatically played as background music when you play a slideshow.

### Movie Setup

To configure your movie preferences,

- Click **Movie** in the menu bar.



**Figure 14:** Movie Setup Menu

### **Audio Language**

Select the language for the default audio when playing a movie.

### **Subtitle**

Select the language for the default subtitle when playing a movie.

If **Off** is selected, subtitles will not be displayed.

### **Menu Language**

Select the language for the default menu when playing a movie.

### **Angle Mark**

Display the angle mark on the screen for three seconds when playing a movie in which a scene has been shot from more than one angle.

If **Off** is selected, the angle mark will not be displayed.

## 3. Playing Music

The FreeAgent | Theater media player provides a list of your songs arranged in alphabetical order by file name and can play a single file or a playlist of music files. You can also use your music as background for a photo slideshow.

While music is playing, the media player displays time (total length and elapsed time), title, artist, and album information from the ID3 tag of an MP3 file.

---

**Note:** Use the remote control to move among your music files and select listening options.

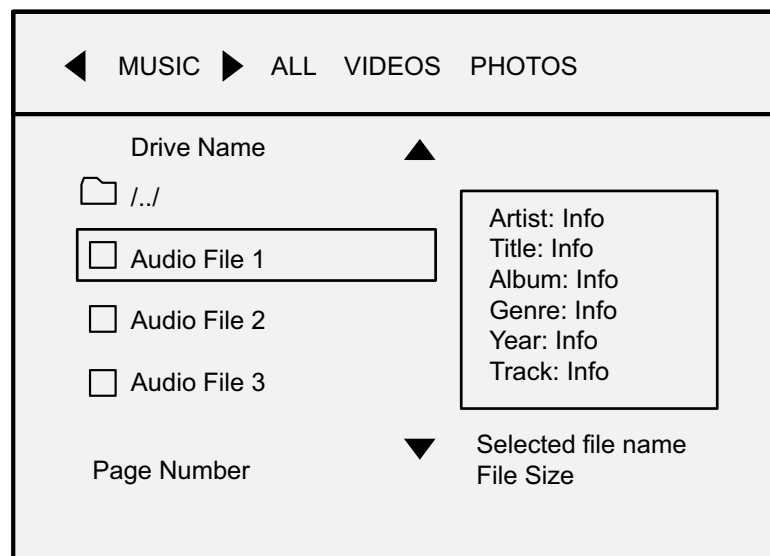
---

To play music,

**Step 1.** On the main menu, select the device (**FreeAgent Go** or **External Storage**) containing the music you want to play.

**Step 2.** Select **Music** in the menu bar.

The **Music** window displays a list of the music stored in the selected folder:



**Figure 15:** Music Window

**Step 3.** Navigate to the desired music folder and select the audio file to be played. A preview of the selected music displays information about the file.

**Step 4.** Press **Select** or **Play/Pause** to start the music.

**Step 5.** Press **Stop** to stop the music and **Return** to return to the **Music** window.

## Supported Audio File Types

The media player supports these audio file types:

- MP3
- AC3
- ASF
- OGG
- WAV
- WMA
- M3U

## Playback Options

You can set the music in a selected folder to play in a variety of ways:

- **Normal:** Play all files consecutively.
- **Shuffle:** Randomly play all files in the folder until all files have played.
- **Repeat One:** Repeat the current track.
- **Repeat All:** Repeat all files in the folder in consecutive order.
- **Shuffle Repeat:** Randomly play all files in the folder, then repeat them once all files have played.

## 4. Playing Videos

You can load videos from your computer onto a FreeAgent | Go drive, then insert the drive in the FreeAgent | Theater media player and play the videos on your TV. You have access to the same video menus and features as those available when you watch a video on your computer.

You can also drag media files from your computer onto any NTFS- or FAT32-formatted USB storage device and use the USB port on the front of the media player to connect that device to your TV.

---

**Note:** Use the remote control to move among your videos and select viewing options.

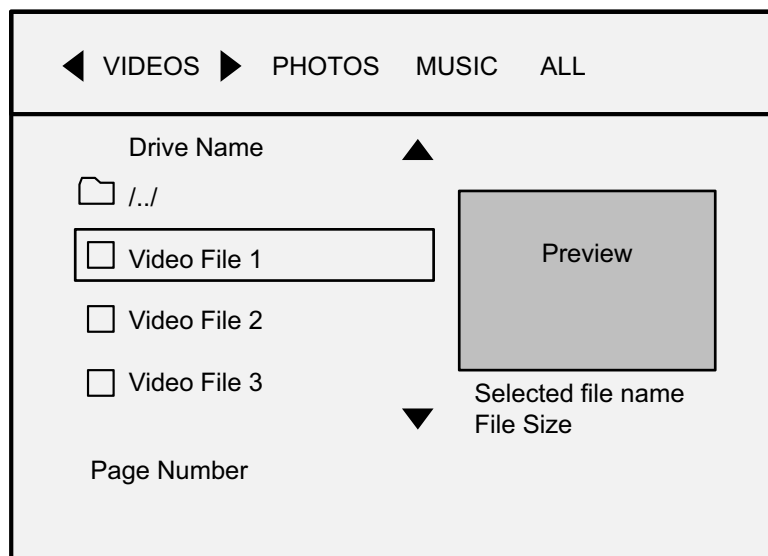
---

To play a video,

**Step 1.** On the main menu, select the device (**FreeAgent Go** or **External Storage**) containing the video you want to play.

**Step 2.** Select **Videos** in the menu bar.

The **Videos** window lists the videos stored in the selected folder:



**Figure 16:** Videos Window

**Step 3.** Navigate to the desired video.

A preview of the selected video is displayed.



**Step 4.** Press **Select** or **Play/Pause** to display the video menu or start the video, depending upon the format in which the video was copied to the drive.

---

**Note:** If your video content is stored in a Video\_TS folder, you can press **Select** or **Play/Pause** at the folder level to play the proper file inside the folder.

---

**Step 5.** Press **Stop** to stop the video and **Return** to return to the **Video** window.

## Supported Video File Types

The media player supports these video file types:

- **MPEG1:**
  - MPG/MPEG
  - DAT
- **MPEG2:**
  - MPG/MPEG
  - VOB/ISO/IFO
  - TS
  - MKV
- **DivX® files:**
  - AVI
  - MOV (through DivX converter)
  - MP4
  - DivX
- **XVID:**
  - AVI

## Video Display

The media player supports a variety of subtitle formats and provides all common video control functions.

### Subtitle Formats

The media player plays supported subtitle formats with a video. The subtitle file name must be the same as the video file name and the subtitle file and video file must reside in the same folder.

The media player supports these subtitle formats:

- SMI/SAMI
- SRT
- SUB

## Video Playback Features

The media player remote control provides all common video control functions:

- Main Menu
- Forward/Reverse (< / >): 2x, 4x, 8x, 16x, 32x:
  - Press repeatedly to fast forward or fast reverse the video at increasingly greater speeds.
- Slow motion (1/2, 1/4, 1/8, 1/16):
  - Press **PLAY/PAUSE** to pause the video.
  - Press **FORWARD** for play in slow motion. Press repeatedly for increasingly slow play.
  - Press **PLAY/PAUSE** again to resume normal play.
- A - B Repeat:
  - Set point A and point B and replay that portion of the video.
- Play/Stop/Pause
- Chapter forward/backward (<< / >>)
- Subtitles
- Repeat
- Zoom (2x, 4x, 8x)
- Angle Mark:
  - If a scene has been shot from more than one angle, switch the video angle.

## 5. Viewing Photos

The FreeAgent | Theater media player allows you manage and display photos in a variety of ways:

- Display photos in a list view or a thumbnail view
- Rotate images
- Play photos and videos directly from compatible digital cameras on your TV
- Play a folder of photos as a slideshow complete with background music and transition effects

The media player displays images in the JPG/JPEG format up to 20 megapixels in size.

---

**Note:** Use the remote control to move among your photos and select viewing options.

---

### Viewing Individual Photos

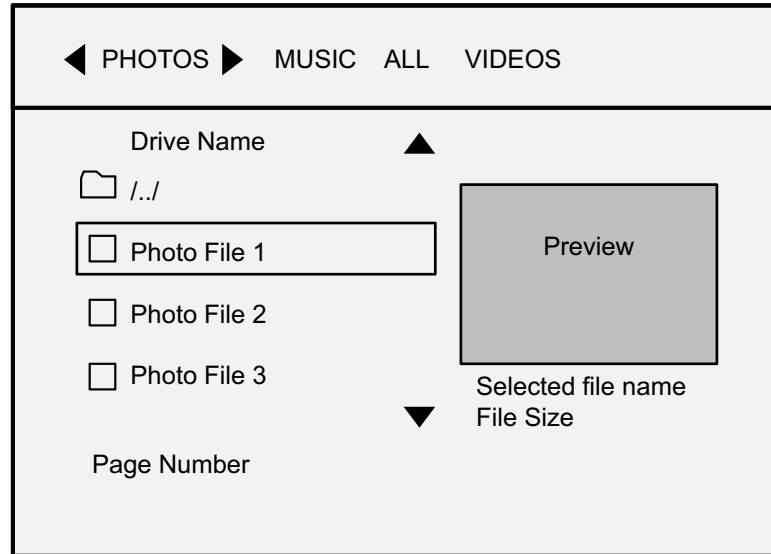
You can browse through your photos by scrolling through them in the **Photos** window. You don't have to create a slideshow to view your photos; you can open a full-screen view of an individual picture.

To view individual photos,

**Step 1.** On the main menu, select the device (**FreeAgent Go** or **External Storage**) containing the photos you want to view.

**Step 2.** Select **Photos** in the menu bar.

The **Photos** window displays a list of the photo folders stored in the selected folder:



**Figure 17:** Photos Window

- Step 3.** Navigate to the desired folder of photos and select a photo to view.  
A preview of the selected photo is displayed.
- Step 4.** Press **Select** or **Play/Pause** to start a full-screen slideshow.  
The image is scaled to fit your screen.
- Step 5.** Press **Play/Pause** to stop the slideshow on a particular photo and **Select** or **Play/Pause** to resume the slideshow.
- Step 6.** Press **Return** to go back to the **Photos** window.

## Browsing Photo Thumbnails

If you take a lot of photos, it can be difficult to find a particular picture if you don't remember which folder you've stored it in. You can browse the photos in a folder in thumbnail view to easily locate specific photos in your collection.

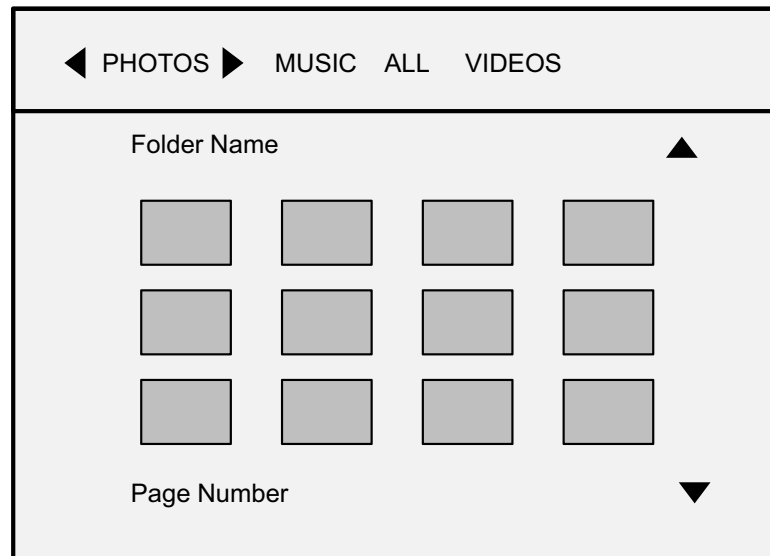
---

**Note:** Thumbnail view is available only when **Photos** is selected in the menu bar; it is not available when **All** is selected.

---

To browse photo thumbnails,

- Step 1.** On the main menu, select the device (**FreeAgent Go** or **External Storage**) containing the photos you want to view.
- Step 2.** Select **Photos** in the menu bar.  
The **Photos** window displays a list of photo folders stored on the drive.
- Step 3.** Select a folder and press **Options** to display photos in a thumbnail view.  
The photos in the selected folder are displayed in a thumbnail grid:



**Figure 18:** Photo Thumbnails

**Note:** Depending upon how many images are stored in a folder, it may take a few moments for the thumbnails to display.

- Step 4.** Using the four arrow keys to navigate through the thumbnails, select an image for a full-size view of the photo and press **Select** or **Play/Pause**.  
The image is scaled to fit your screen.
- Step 5.** Press **Return** to display photos in a list view.

## Rotating Photos

When you take a photo in landscape view rather than portrait view, that image is displayed on its side. You can rotate the photo 90 degrees to the left or right to display it in the upright position. Or you can rotate a photo to display it upside down or on its side for a special effect.

To rotate a photo,

- Step 1.** On the main menu, select the device (**FreeAgent Go** or **External Storage**) containing the photos you want to view.
- Step 2.** Select **Photos** in the menu bar.  
The **Photos** window opens.
- Step 3.** Navigate to the desired folder of photos and select a photo to view.  
A preview of the selected photo is displayed.
- Step 4.** Press **Select** or **Play/Pause** to start a full-screen slideshow.  
The image is scaled to fit your screen.
- Step 5.** Press **Play/Pause** to stop the slideshow on a particular photo.
- Step 6.** Use the right and left arrow keys to rotate the image. Each click turns the image 90 degrees in the direction of the arrow key.

---

**Note:** The image rotation is not saved. To permanently rotate an image, you must open the folder on your computer and rotate the image.

---

- Step 7.** Press **Select** or **Play/Pause** to resume the slideshow.
- Step 8.** Press **Return** to go back to the **Photos** window and select another photo to rotate.

## Playing Photos and Videos from Compatible Digital Cameras

You can connect a compatible digital camera to the media player with a USB cable to display photos and videos stored on the camera on your TV.

Not all digital cameras can be used with the media player. To find out if your camera is compatible, connect it to the USB port on the front of the media player and see if the camera is displayed in the list of external devices on your TV.

Not all video file types are compatible, either. To find out if a video on your camera can be viewed with the media player, click the video folder. If it doesn't open, the video can't be viewed via the media player. Remember that the only compatible photo file type is a jpg/jpeg 20 megapixels or smaller.

---

**Note:** Checking to see if a digital camera or file type is compatible with the media player will not harm it.

---

To play images from a compatible digital camera,

- Step 1.** On the main menu, select **External Storage**.  
Your digital camera is displayed in the **External Storage** list.
- Step 2.** Select your camera in the list and click on the camera's memory card.  
A list of the folders stored on your camera is displayed.
- Step 3.** Select **All** in the menu bar so that you can choose to play either photos or a video from your camera.  
The **All** window opens.
- Step 4.** Select a folder to play the media stored in it.
- Step 5.** Press **Select** or **Play/Pause** to start a full-screen photo slideshow or play a compatible video.
- Step 6.** Press **Return** to go back to the **All** window.

## Playing a Slideshow

Playing a slideshow is the easiest way to display all the images in a folder without having to navigate to and open each picture individually.

To create and play a slideshow,

- Use the **Setup** menu to select the time interval and transition effect for your photo display and turn on the background music option.

---

**Note:** You can accept the default Slideshow settings of a 2 second interval, a cross fade transition, and no background music without having to open the **Setup** menu.

---

- Use the **Photos** window to play the slideshow.

If you want to play music with your slideshow, you must put the desired music files in the same folder as the photos to be played in the slideshow **before you copy your media files from your PC**.

To play a slideshow,

- Step 1.** On the main menu, select the device (**FreeAgent Go** or **External Storage**) containing the photos you want to view.
- Step 2.** Select **Photos** in the menu bar.  
The **Photos** window opens.
- Step 3.** Navigate to the desired folder of photos.  
A photo preview for the photos in the selected folder is displayed.
- Step 4.** Press **Select** or **Play/Pause** to begin a full-screen slideshow.

**Step 5.** Press **Stop** to stop the slideshow and return to the **Photo** menu.

### Slideshow Features

- **Zoom:** 2x, 4x, 8x
- **Repeat a slideshow:** Toggle among Repeat All, Shuffle Repeat, Shuffle, and Normal.

You can repeat only files in the current folder, not files in sub-folders.



## 6. Using the FreeAgent | Theater Desktop Application

FreeAgent | Theater comes with a CD containing the FreeAgent | Theater application software. The application includes Media Sync, a feature that allows you to automatically synchronize media files between your computer and a FreeAgent | Go drive or any NTFS- or FAT32-formatted USB external storage device. You can use FreeAgent | Theater without installing the FreeAgent | Theater software, but you can't synchronize your media files without it.

### Installing the FreeAgent | Theater Software

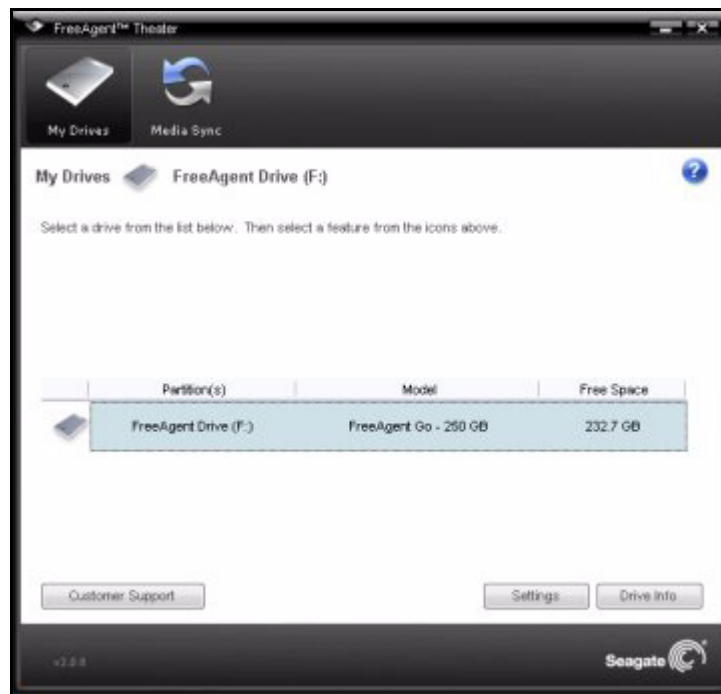
The FreeAgent | Theater application software can be found on the FreeAgent | **Theater Installation** CD included in the product box.

To install the FreeAgent | Theater application software,

- Step 1.** Insert the FreeAgent | **Theater Installation** CD in your computer.  
The **Select Language** window opens.
- Step 2.** Click the language in which you want to install the application.  
The main menu opens.
- Step 3.** Click **Install FreeAgent | Theater**.  
The InstallShield Wizard **Welcome** window opens.
- Step 4.** Follow the onscreen instructions in the Wizard to install the software.
- Step 5.** Click **Finish** to complete the installation.  
A FreeAgent | Theater icon appears on your desktop:



**Step 6.** Double-click the icon to open the application:



**Figure 19:** FreeAgent | Theater Application

## Using the FreeAgent | Theater Application

The FreeAgent | Theater desktop application allows you to manage your connected external drives and USB devices and to use the Media Sync software to sync media files between your computer and your external drives.

### Accessing the FreeAgent Drive Features

- **My Drives** lists all external drives connected to your computer.
- **Settings** allows you to manage your USB external drive features:

**Note:** You can use the FreeAgent | Theater application with any USB device, but only Seagate and Maxtor drives have access to all the **Settings** options. Other USB devices have access only to the software update for the desktop application.

- power setting
- drive health test
- drive light adjustment (FreeAgent drive only)

- application software updates
- product registration (Seagate and Maxtor drives only)
- **Media Sync** allows you to synchronize media files between your PC and external USB storage devices. For instructions on how to use Media Sync, refer to “Using Media Sync” in this user guide.

---

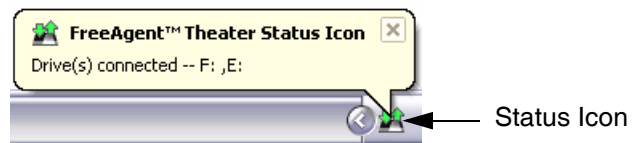
**Note:** The FreeAgent | Go drive comes with its own software, which includes a different Sync feature. There is no conflict between the FreeAgent | Theater’s MediaSync feature and the FreeAgent | Go drive’s Sync feature, but only MediaSync is designed to find media files on your PC and sync them with external drives for play on your TV.

---

## Using the System Tray Status Icon

The FreeAgent | Theater Status icon in your system tray keeps you apprised of the status of your external drive and provides quick access to drive features.

To check the status of your drive, roll your mouse over the Status icon:



**Figure 20:** FreeAgent | Theater Status Icon

The color of the Status icon conveys this information:

**Table 2:** Status Icon Colors

Status Icon Color	Status
Blue	Drive connected
Green	Drive connected Sync idle
Gray	No drive connected
Yellow	Sync in progress
Red	Sync failed

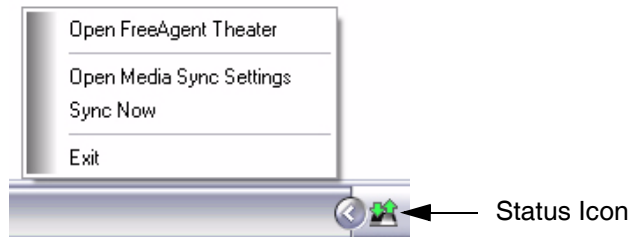
---

**Note:** When a sync has failed, the red icon continues to display until the next successful sync.

---

To use the FreeAgent | Theater system tray menu,

**Step 1.** Click the Status icon to display the menu:



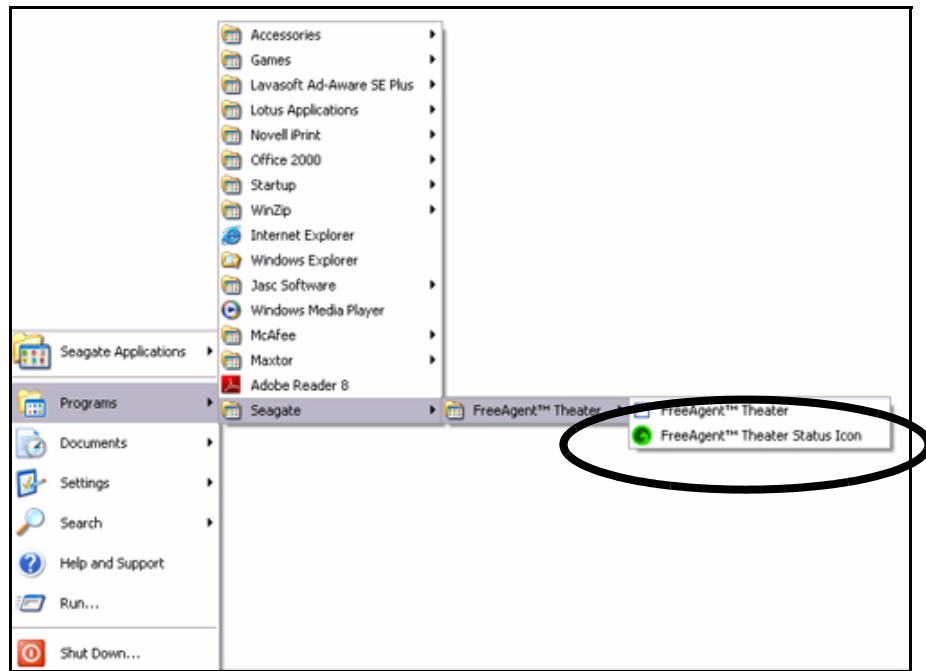
**Figure 21:** System Tray Menu

**Step 2.** Select the feature you want to access or select **Exit** to close the menu.

### Restoring the System Tray Status Icon

If you select **Exit** on the system tray menu, the Status icon disappears from the system tray. To restore the Status icon to the system tray, go to

**Start > Programs > Seagate > FreeAgent > Theater > FreeAgent > Theater Status Icon**

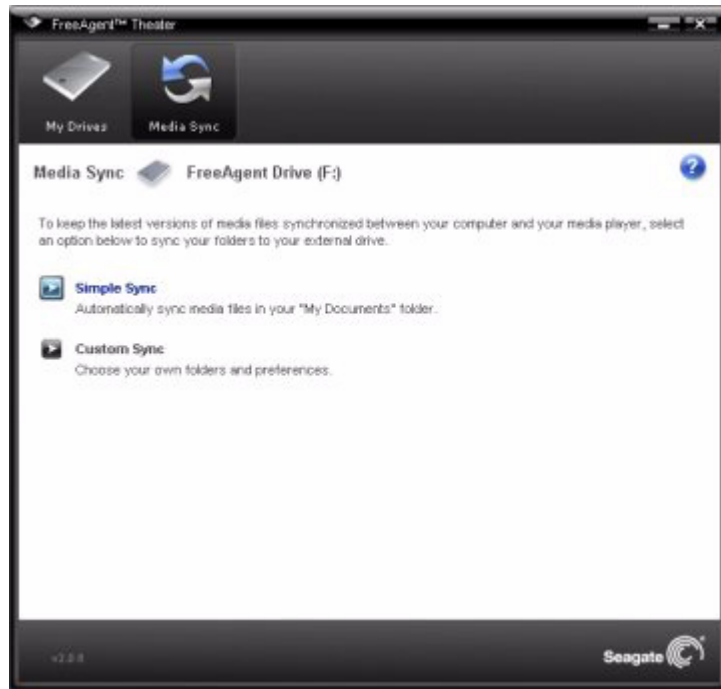


**Figure 22:** Restore Status Icon

## 7. Using Media Sync

To use Media Sync, install the FreeAgent | Theater software on your computer and select folders to sync with your external drive. From then on, whenever you connect the drive to your PC, the media folders on the drive are synchronized with the media folders on your PC.

For example, suppose you sync a photo folder from your PC to your external drive for play on your TV. Then you add new images to the photo folder on your PC. You can update the contents of the photo folder on your drive by reconnecting the drive to your PC.



**Figure 23:** FreeAgent | Theater Media Sync

There are two sync options:

Simple Sync	Custom Sync
Sync media files in XP <b>My Documents</b> folder or Vista <b>Personal</b> folder	Select one or more folders to sync
Sync all media file types	Select media file types to sync
Sync automatically	Select automatic or manual sync

## Using Simple Sync

Simple Sync is pre-configured to automatically sync all compatible media files in your XP **My Documents** or Vista **Personal Folder** folder. Newer file versions always overwrite older versions.

To select Simple Sync,

- In the **Media Sync** window, click **Simple Sync**.

The **Simple Sync Confirmation** window opens.

Your XP **My Documents** folder or Vista **Personal Folder** folder is now synchronized with your FreeAgent drive.

## Using Custom Sync

Custom Sync allows you to select specific folders and media file types for synchronization and to choose sync settings.

To configure Custom Sync,

- Step 1.** In the **Media Sync** window, click **Custom Sync**.

The **Folder Selection** window opens.

- Step 2.** Select the folders to be synchronized.

- Step 3.** Click **Next**.

The **File Types** window opens.

- Step 4.** Select the types of media files you want to sync:

- **Photos** (jpeg jpg)
- **Music** (asf ac3 m3u mp3 ogg wav wma)
- **Videos** (avi dat divx iso ifo mkv mov mp4 mpg mpeg ts vob)

- Step 5.** Click **Next**.

The **Media Sync Rules** window opens.

- Step 6.** Set your Sync Rules:

- Sync automatically each time a file changes  
— OR —
- Sync manually using the **Sync Now** button in the **Sync** window

- Step 7.** Click **Finish**.

The **Media Sync** settings window opens.

## Managing Media Sync Settings

Use the Media Sync **Settings** window to edit your sync settings, check the sync status, or delete your sync settings.



**Figure 24:** FreeAgent | Theater Media Sync Settings

### Editing Media Sync Settings

To change any of your sync settings,

- Step 1.** In the **Media Sync** window, click **Edit Sync Settings**,
- Step 2.** Use the **Media Sync** windows to add or remove folders from sync and change your file type and Sync Rules selections.

### Checking Sync Status

To check the status of a sync,

- Step 1.** In the **Media Sync** window, click **Check Sync Status**.  
The **Sync Status** window opens.

Listed are the names of the computers on which sync was set up, the date of the last sync, and the Automatic Sync setting (**On** or **Off**).

- Step 2.** Click **OK** to return to the **Media Sync** window.



## Deleting Media Sync Settings

---

**Note:** Deleting your Media Sync settings will not delete the media files stored on your drive.

---

To delete your sync settings and create a new set,

**Step 1.** In the **Media Sync** window, click **Delete Sync Settings**.

The **Delete Sync Settings Confirmation** window opens.

**Step 2.** Click **Delete**.

The original **Media Sync** window opens.

**Step 3.** To create new sync settings, select **Simple Sync** or **Custom Sync**.

## Using Automatic Sync

The Automatic Sync feature continuously tracks file changes in synchronized folders and automatically synchronizes revised versions by overwriting older versions with newer versions. Your external drive must be connected during Automatic Sync.

By default, Automatic Sync is turned on.

### Turning Off Automatic Sync

You can turn off Automatic Sync and control when files are synchronized rather than synchronizing files automatically.

To turn off Automatic Sync,

**Step 1.** In the **Media Sync** window, click the Automatic Sync **Off** button.

**Step 2.** To sync manually when Automatic Sync is off,

- Click **Sync Now** in the lower right corner of the **Media Sync** window.

— OR —

- Select **Sync Now** from the system tray **FreeAgent | Theater** menu.

## 8. About DivX® Certification

FreeAgent | Theater is an official DivX® certified product with the DivX Home Theater Profile. It plays all versions of DivX video (including DivX 6) with standard playback of DivX media files.

DivX Certified products are officially tested by the creators of DivX and guaranteed to play all versions of DivX video, including DivX 6. Certified products qualify for one of several DivX Profiles that designate the type of video the product supports, from compact portable video to high-definition video.

### About DivX

DivX is a popular media technology created by DivX, Inc. DivX media files contain highly compressed video with high visual quality that maintains a relatively small file size. DivX files can also include advanced media features like menus, subtitles, and alternate audio tracks. Many DivX media files are available for download online, and you can create your own using your personal content and easy-to-use tools from DivX.com.

MOV and AVI files can be played on FreeAgent | Theater if they are run through the DivX Converter application. The DivX Converter is available on **[www.DivX.com](http://www.DivX.com)**.

# Index

## Numerics

1080i *16*

720p *16*

720p vs 1080i *15*

## A

A - B repeat *26*

angle mark *26*

aspect ratio *14*

16 by 9 *14*

Letter Box *14*

PAN SCAN *14*

audio digital output *13*

SPDIF LPCM *13*

SPDIF RAW *13*

audio setup *13*

audio digital output *13*

Automatic Sync *41*

## B

background music *20*

## C

certification, by DivX *42*

check sync status *40*

composite vs component vs s-video *15*

Custom Sync *39*

## D

delete Media Sync settings *41*

DivX® *42*

## F

factory default *18*

forward/reverse *26*

FreeAgent | Go drive and PC dock *8*

FreeAgent | Theater *5, 12*

application software *5, 33*

audio setup *13*

components *6*

configure *12*

desktop application *33, 34*

install software *33*

Media Sync *38*

menus *10*

movie setup *20*

music display *22*

overview *5*

remote control *8*

select a storage drive *10*

setup *12*

slideshow setup *18*

video setup *13*

FreeAgent | Theater desktop application *33*

drive features *34*

features *34*

Media Sync *35*

My Drives window *34*

restore system tray status icon *36*

settings *34*

system tray menu *36*

system tray status icon *35*

FreeAgent | Theater media player *7*

reset *17*

FreeAgent | Theater setup *12*

audio *13*

movie *20*

select screen language *12*

slideshow *18*

system *17*

video *13*

FreeAgency | Theater

system setup *17*

## I

interlaced vs progressive *15*

## L

Letter Box *14*

**M**

manage Media Sync settings *40*

media player, reset *17*

Media Sync *38*

    Automatic Sync *41*

    check sync status *40*

    Custom Sync *39*

    delete settings *41*

    edit settings *40*

    settings *40*

    Simple Sync *39*

movie setup *20*

    angle mark *21*

    audio language *21*

    menu language *21*

    subtitle language *21*

**O**

organize media files and folders *10*

    prepare background music files for slideshow *11*

**P**

PAN SCAN *14*

photo slideshow *31*

photo slideshow setup *18*

    background music *20*

    timing *19*

    transition effect *19*

photo thumbnails *28*

play music *22*

    audio file types *23*

    playback options *23*

play photos and videos from digital camera *30*

play slideshow *31*

play videos *24*

    supported video file types *25*

prepare background music files for slideshow *11, 20, 31*

progressive vs interlaced *15*

**R**

remote control *8*

reset media player *17*

rotate photos *29*

**S**

screen language *18*

SD interlace *16*

SD progressive *16*

select screen language *12*

setup, audio *13*

setup, movie *20*

setup, slideshow *18*

setup, system *17*

setup, video *13*

Simple Sync *39*

slideshow features *32*

    repeat *32*

    zoom *32*

slideshow setup *18*

    background music *20*

    timing *19*

    transition effect *19*

slow motion *26*

supported audio file types *23*

supported video file types *25*

supported video subtitle formats *25*

system setup *17*

    factory default *18*

    movie setup *20*

    screen language *18*

    version *18*

system software version *18*

system tray status icon *35, 36*

**T**

thumbnails *28*

turn off Automatic Sync *41*

TV system *14*

    NTSC *14*

    PAL *14*

**V**

version, system software *18*

- video display 25
  - supported subtitle formats 25
- video playback 26
  - A - B repeat 26
  - angle mark 26
  - forward/reverse 26
  - slow motion 26
- video resolution 14
  - 1080i 16
  - 720p 16
  - SD interlace 16
  - SD progressive 16
- video resolution FAQs 15
- video resolution options 16
- video resolution problems 16
- video setup 13
  - aspect ratio 14
  - brightness 14
  - contrast 14
  - TV system 14
  - video resolution 14
- view photos 27
  - browse photo thumbnails 28
  - play photos and videos from digital camera 30
  - play slideshow 31
  - rotate photos 29
  - supported file type 27
  - view individual photos 27
- view photos without slideshow mode 27